

Lamb # 1

- Live Wt. = 131
- Dress % = 51
- Back Fat = .22
- Rib Eye = 2.3
- Yield Grade = 2.6
- Adj. Yield = 3.1
- Carcass Val. = \$145.99
- Live Price = \$1.11
- Team Paid = \$1.10
- Profit = \$1.76
- Raging Bulls and Friends



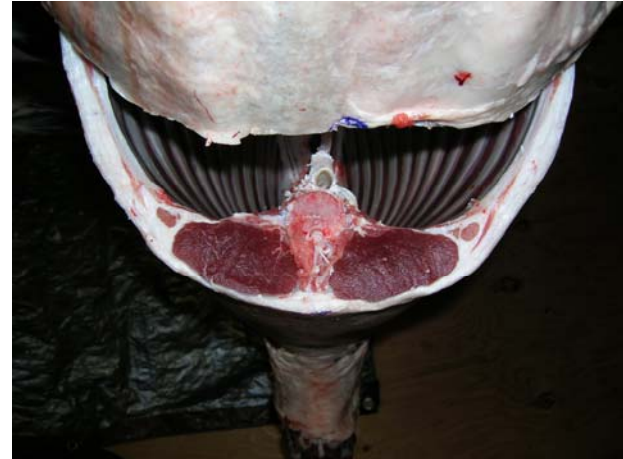
Lamb # 2

- Live Wt. = 151
- Dress % = 57
- Back Fat = .35
- Rib Eye = 3.1
- Yield Grade = 3.9
- Adj. Yield = 3.4
- Carcass Val. = \$184.90
- Live Price = \$1.22
- Team Paid = \$1.00
- Profit = \$33.90
- Shepherders & Sheep Dogs



Lamb # 3

- Live Wt. = 128
- Dress % = 49
- Back Fat = .12
- Rib Eye = 2.75
- Yield Grade = 1.6
- Adj. Yield = 2.8
- Carcass Val. = \$141.75
- Live Price = \$1.11
- Team Paid = \$1.10
- Profit = \$0.95
- Wild and Woolly



Lamb # 4

- Live Wt. = 118
- Dress % = 50
- Back Fat = .2
- Rib Eye = 2.3
- Yield Grade = 2.4
- Adj. Yield = 2.8
- Carcass Val. = \$131.57
- Live Price = \$1.12
- Team Paid = \$1.08
- Profit = \$4.13
- Coyote Bait



Lamb # 5

- Live Wt. = 115
- Dress % = 61
- Back Fat = .12
- Rib Eye = 2.25
- Yield Grade = 1.6
- Adj. Yield = 2.1
- Carcass Val. = \$115.54
- Live Price = \$1.00
- Team Paid = \$1.10
- Profit = \$-10.96
- Ewenique

